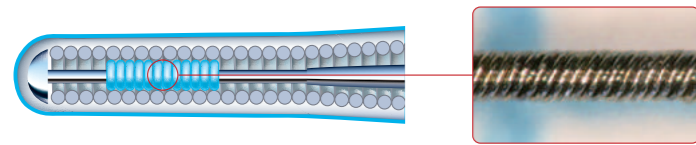


Composite Core

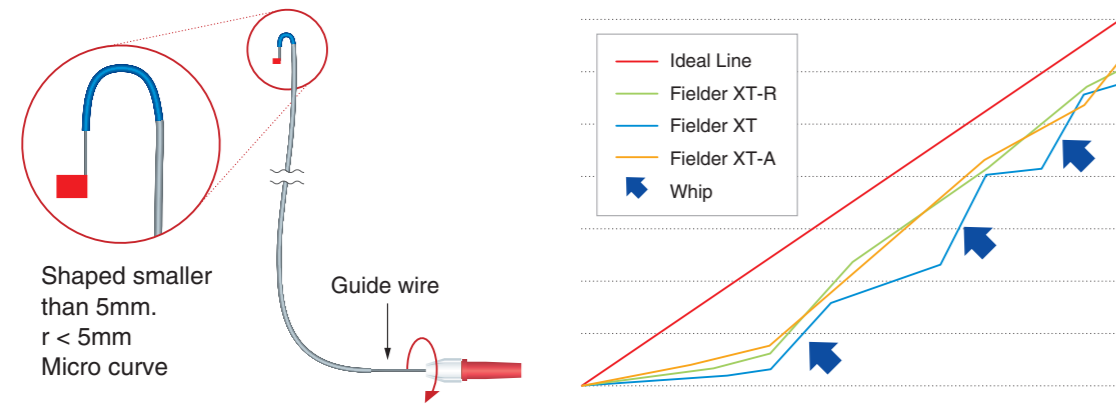
Multiple wire components to enhance durability and torque transmission.



Employs the ASAHI brand rope coil, which provides torqueability, flexibility and resiliency.

Torque Response

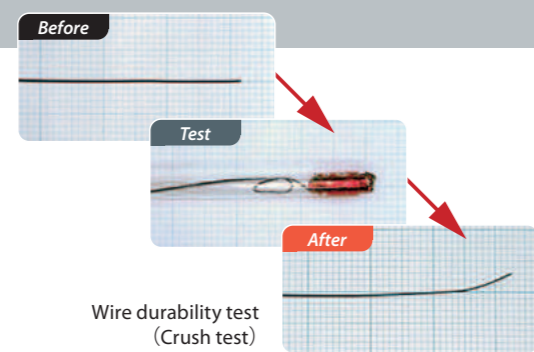
No whip : It provides better control ability by fixing guide wire tip to the right direction.



All the data were obtained by company standardized test, which may differ from industry standardized tests. All the data do not prove that all devices have exactly the same performance with the samples used for tests.

Tip Durability

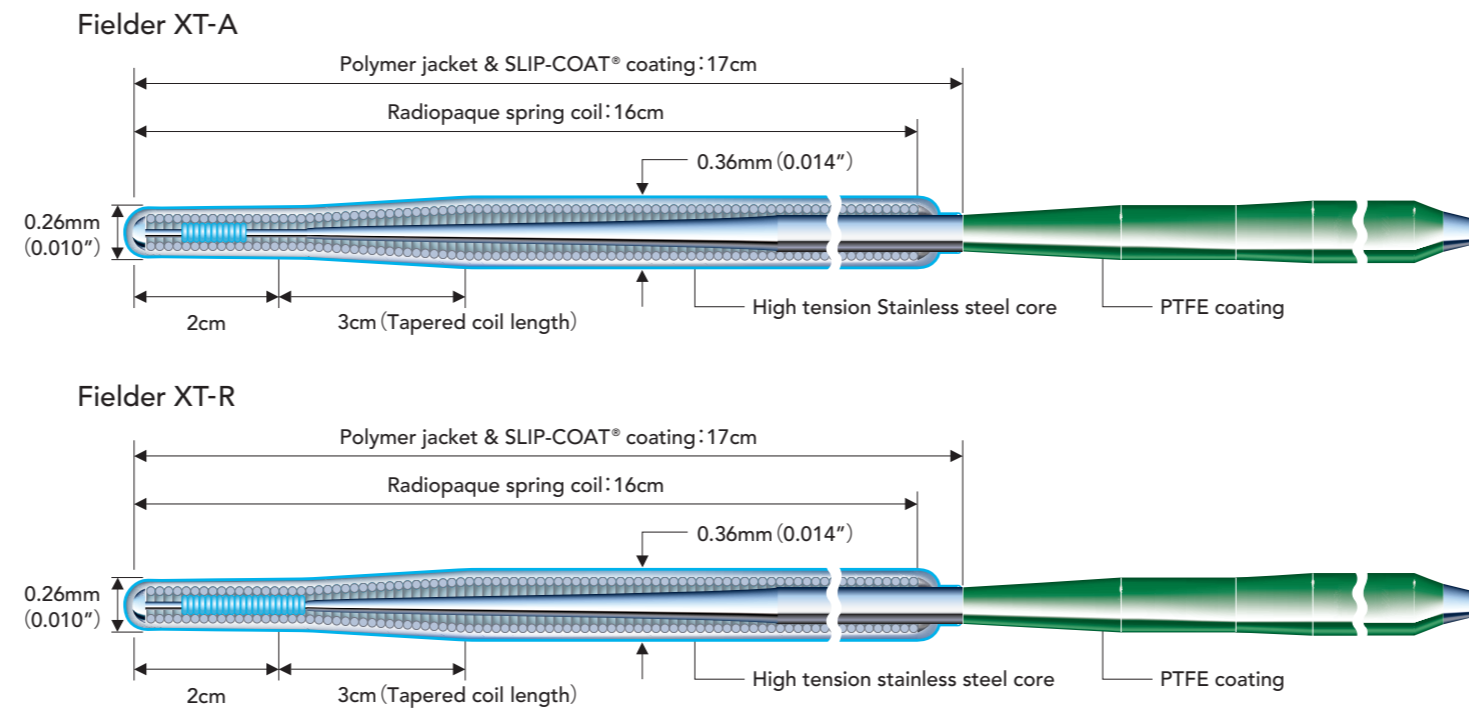
A guide wire is knuckled and pushed into a simulated artery but Fielder XT-A and Fielder XT-R possess a durable tip suited for treating multiple lesions.



All the data were obtained by company standardized test, which may differ from industry standardized tests. All the data do not prove that all devices have exactly the same performance with the samples used for tests.

Ordering Information

Structure



Product	Catalog No.	Diameter	Usable Length	Spring Coil Length	Radiopaque Length	Tip Shape
Fielder XT-A	APW14R009S	0.36 / 0.26mm (0.014 / 0.010inch)	190cm	16cm	16cm	Straight
	APW14R309S	0.36 / 0.26mm (0.014 / 0.010inch)	300cm	16cm	16cm	Straight
Fielder XT-R	APW14R005S	0.36 / 0.26mm (0.014 / 0.010inch)	190cm	16cm	16cm	Straight
	APW14R305S	0.36 / 0.26mm (0.014 / 0.010inch)	300cm	16cm	16cm	Straight

Coated with SLIP-COAT® coating. SLIP-COAT® is a trademark of Angiotech BioCoatings Corp. in the U.S. and /or other countries.

Fielder and ACTONE are trademarks or registered trademarks of ASAHI INTECC CO.,LTD. in Japan and other countries.

Manufactured by:



ASAHI INTECC CO.,LTD.
<http://www.asahi-intecc.com>

Distributed by:

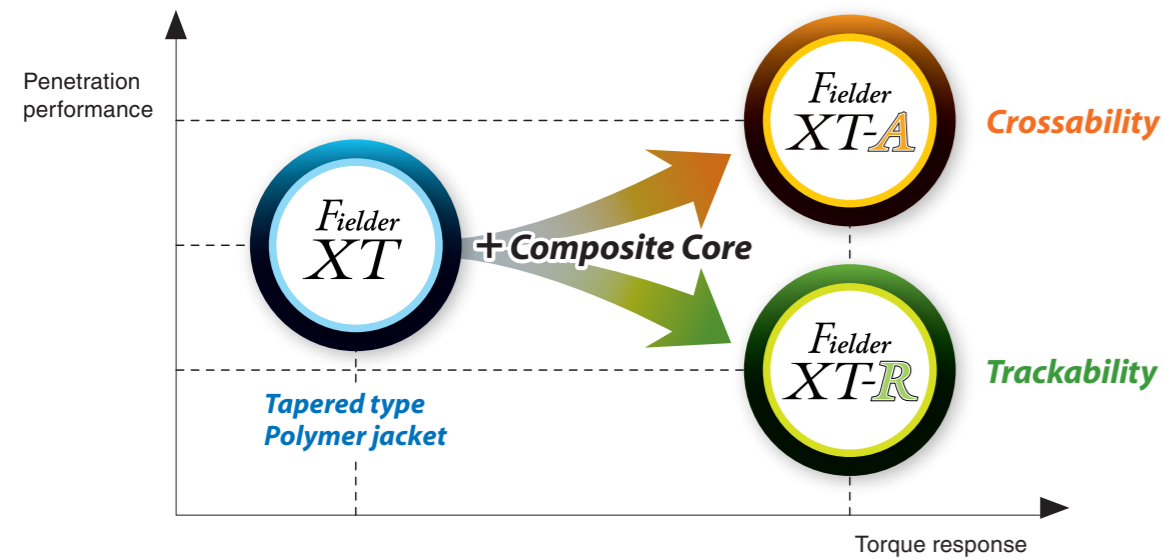
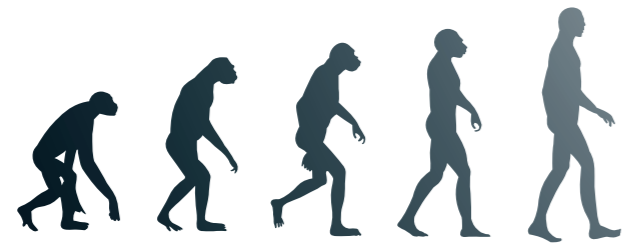


Fielder XT-A
Fielder XT-R
P T C A Guide Wire

Your dreams. Woven together.
ASAHI INTECC

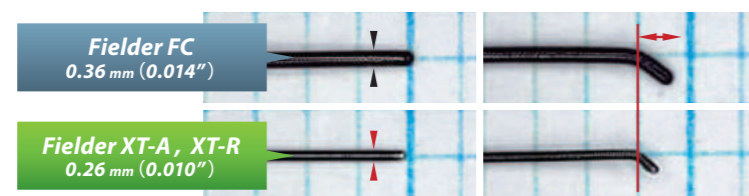
Beyond *Fielder XT*

Extreme Precision for Complex Lesions



Small Tip Shapability

It provides the potential for the loose tissue and collateral channel tracking by a small curve and tapered tip.



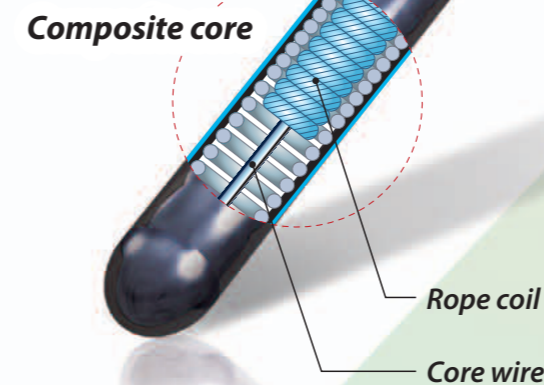
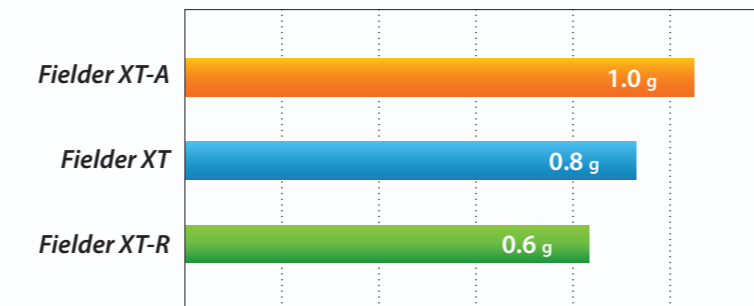
Proven **A**ntegrade & **R**etrograde Success

Fielder *XT-A*

Torque and control enhance crossability. For the occluded lesions without a stump.



Tip Load

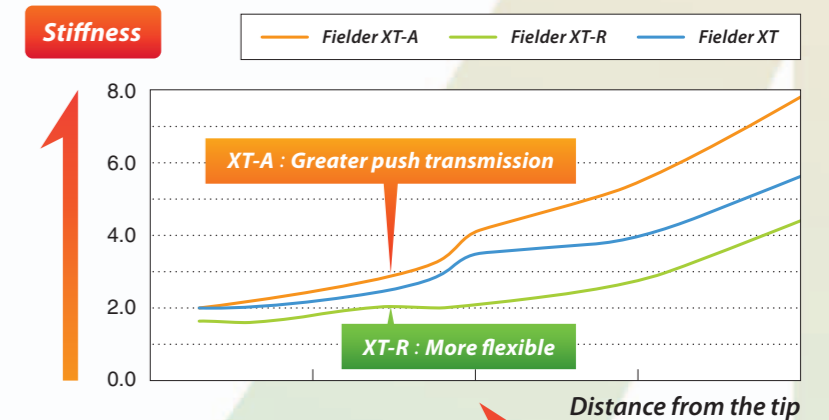


Fielder *XT-R*

Flexibility and control provide trackability. For the channel tracking and sub total occlusion (99%).



Tip Flexibility



All the data were obtained by company standardized test, which may differ from industry standardized tests. All the data do not prove that all devices have exactly the same performance with the samples used for tests.