

ASAHI Silverway

Hydrophilic Coated Spring Coil Guide Wire

with **ACT ONE**

Creating A New standard of Safe and

ASAHI Silverway

Hydrophilic Coated Spring Coil Guide Wire

with **ACT ONE**

Silverway is the ASAHI's newly developed 0.89mm (0.035") spring coil guide wire.

ASAHI has incorporated the innovative technologies developed for PCI guide wires into Silverway guide wire.

This new concept 0.89mm (0.035") spring coil guide wire can become the new STANDARD for tomorrow.

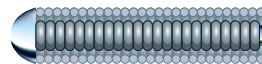
Product's missions

— **Safety** and **Maneuverability** — for daily routine procedures.

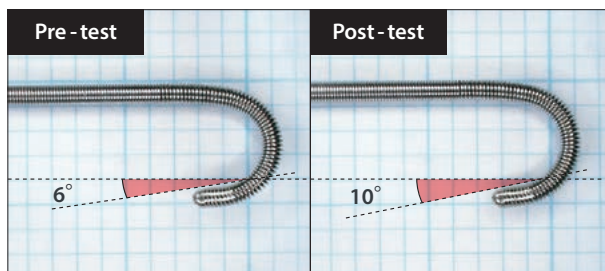
Double coil structure

Maneuverability

Distal tip is constructed with double coil structure. This design improves durability.

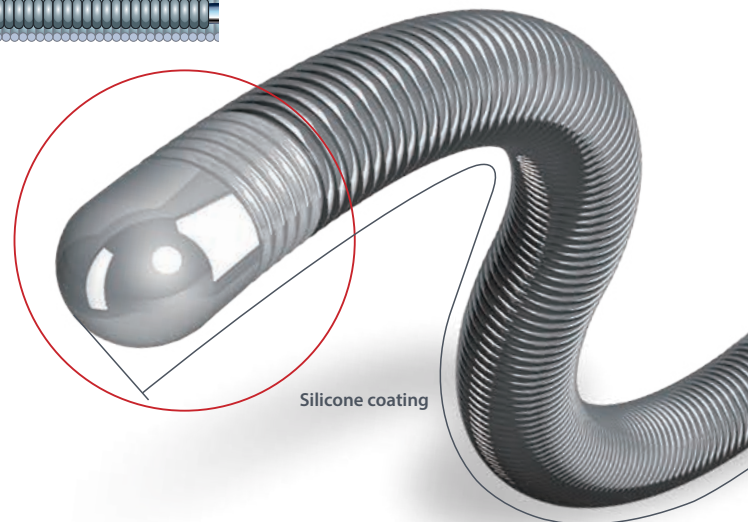


Shape Retention (Shape : 1.5J)



Testing method

The difference in the tip shape angle when the GW is inserted and removed 10 times into the strainer.

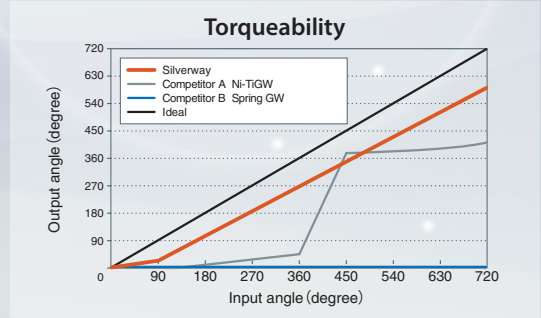


Maneuverable angiographic guide wire

Hybrid shaft design ACT ONE on proximal shaft

Maneuverability

ASAHI's innovative guide wire technologies is incorporated in the proximal shaft. This enables Silverway to achieve outstanding torque performance. This torque performance can contribute significantly when you need it.



Testing method

The input and output angle of the GW rotation when it is inserted into a looped catheter and the proximal shaft is rotated. The length from the tip to the machine is kept equal.

Hybrid coating design

Safety

Distal shaft

Distal 15cm is coated with silicone material for better tactile feedback.

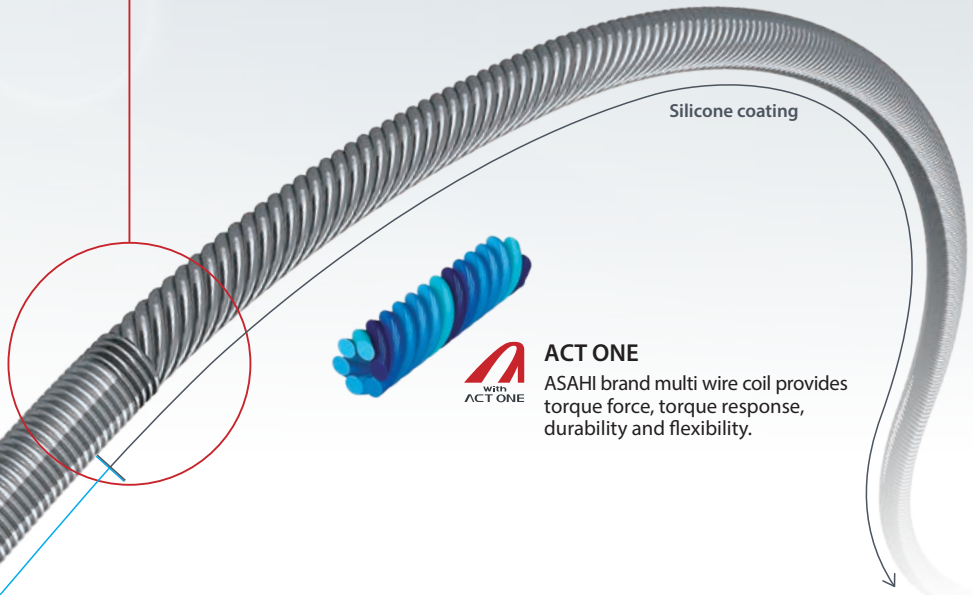
Maneuverability

Mid shaft

Hydrophilic coated mid shaft provides superior lubricity to facilitate smooth delivery.

Proximal shaft

Silicone coated proximal shaft for adequate lubricity and better guide wire handling.



ACT ONE

ASAHI brand multi wire coil provides torque force, torque response, durability and flexibility.

Other

Safety

Soft & Radiopaque tip

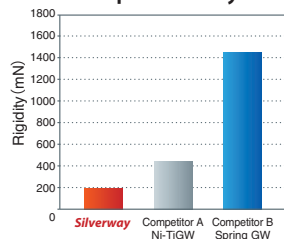
Silverway's highly flexible and radiopaque tip is designed to be less traumatic and easier to visualize.

Maneuverability

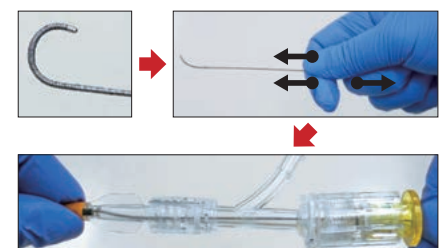
Tip shape

The tip shape of both J-shape and Angled can be stretched easily by hand. It can be inserted into the Y-connector without the use of an inserter.

Tip Flexibility



Soft and Radiopaque tip

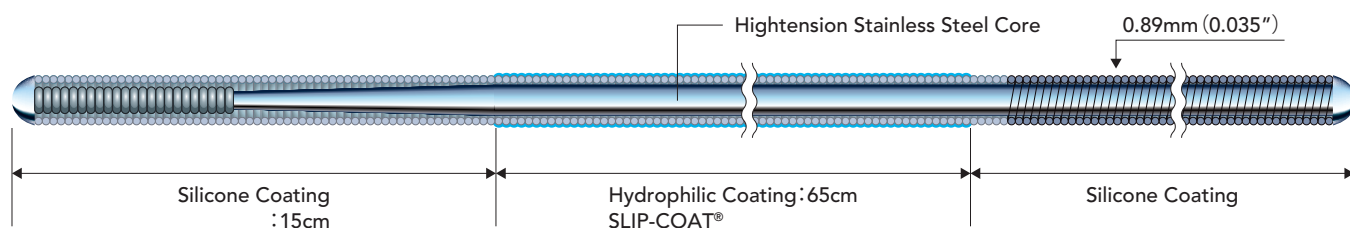


Hydrophilic coating
SLIP-COAT®

Testing method

The maximum force needed to bend the GW at 3 points 10mm from the tip when pushed.

Structure and Ordering Information



Product	Outer Diameter	Catalog No.	Usable Length	Tip Shape
ASAHI Silverway	0.89mm (0.035 inch)	SA0035N15S	150 _{cm}	Angled
		SA0035N18S	180 _{cm}	Angled
		SA0035N20S	200 _{cm}	Angled
		SA0035N22S	220 _{cm}	Angled
		SA0035N26S	260 _{cm}	Angled
		SA0035N30S	300 _{cm}	Angled
		SJ1535N15S	150 _{cm}	J-shape1.5mm
		SJ1535N18S	180 _{cm}	J-shape1.5mm
		SJ1535N20S	200 _{cm}	J-shape1.5mm
		SJ1535N22S	220 _{cm}	J-shape1.5mm
		SJ1535N26S	260 _{cm}	J-shape1.5mm
		SJ1535N30S	300 _{cm}	J-shape1.5mm
		SJ3035N15S	150 _{cm}	J-shape3.0mm
		SJ3035N18S	180 _{cm}	J-shape3.0mm
		SJ3035N20S	200 _{cm}	J-shape3.0mm
		SJ3035N22S	220 _{cm}	J-shape3.0mm
		SJ3035N26S	260 _{cm}	J-shape3.0mm
		SJ3035N30S	300 _{cm}	J-shape3.0mm

CE 0344

© 2019 ASAHI INTECC CO., LTD.
 "ASAHI", "ACT ONE" and "Silverway" are trademarks or registered trademarks of ASAHI INTECC CO., LTD. in Japan and other countries.
 Coated with SLIP-COAT® coating.

Manufactured by:

ASAHI INTECC

ASAHI INTECC CO.,LTD.

3-100 Akatsuki-cho, Seto, Aichi 489-0071 Japan

Contact phone number: +81-561-86-9101

www.asahi-intecc.com

Distributed by: