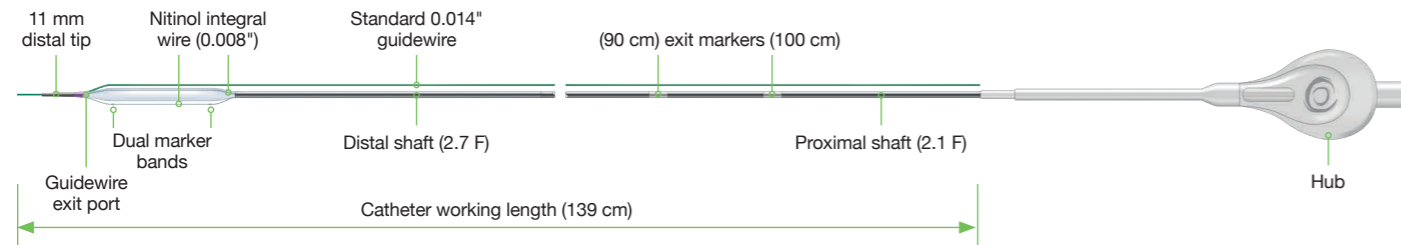


Non-EU manufacturing catalogue numbers

Ø (mm)	Length (mm)		
	10	15	20
1.75	631751011	631751511	631752011
2.00	632001011	632001511	632002011
2.25	632251011	632251511	632252011
2.50	632501011	632501511	632502011
2.75	632751011	632751511	632752011
3.00	633001011	633001511	633002011
3.50	633501011	633501511	633502011
4.00	634001011	634001511	634002011

Technical specifications

Scoreflex® TRIO	
Catheter type	Rapid exchange
Guidewire lumen diameter	0.014"
Balloon material	Nylon blend
Balloon compliance	Non-compliant
Coating (distal shaft and tip)	Hydro-X hydrophilic coating
Coating (guidewire lumen)	Invio hydrophobic coating
Crossing profile (Ø3.0 mm)	0.0334" / 0.86 mm
Nominal pressure	12 atm
Rated burst pressure	20 atm



For more information please visit our website at <https://orbusneich.com/> or contact us:

Corporate Headquarters
Units 303 & 305, 3/F, Building 20E
Hong Kong Science Park
Shatin, N.T., Hong Kong, China
Phone +852.2802.2288
Fax +852.2507.3532

EMEA Regional Headquarters
Drs. W. van Royenstraat 5
3871 AN Hoevelaken
The Netherlands
Phone +31.33.254.1150
Toll Free Phone 00800.0254.1150*

*Only for Belgium,
Denmark, France,
Germany, Ireland,
Netherlands, Norway,
Sweden and UK

©2023 OrbusNeich Medical Group Holdings Limited or its affiliates. All rights reserved.
Scoreflex® Trio is not approved for sale in the USA.
G-70-2288 Rev04

OrbusNeich and Scoreflex are registered trademarks of OrbusNeich Medical Group Holdings Limited or its affiliates.
All data and photos on file. Illustrations are not to be considered as engineering drawings or photos.

Balloon Dilatation Catheter



Pioneering a New Level of Quality

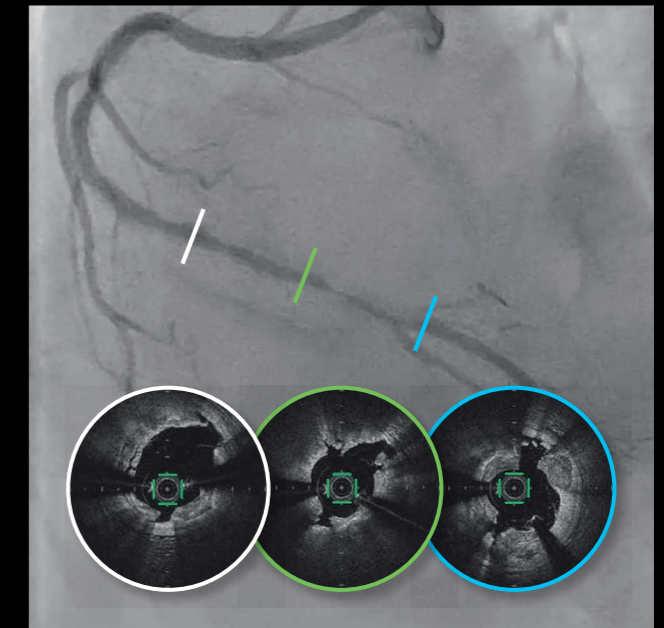
scoreflex® TRIO

Tri-Scoring Innovation: Deliverability, Safety and Effectiveness Aligned



Deliverability

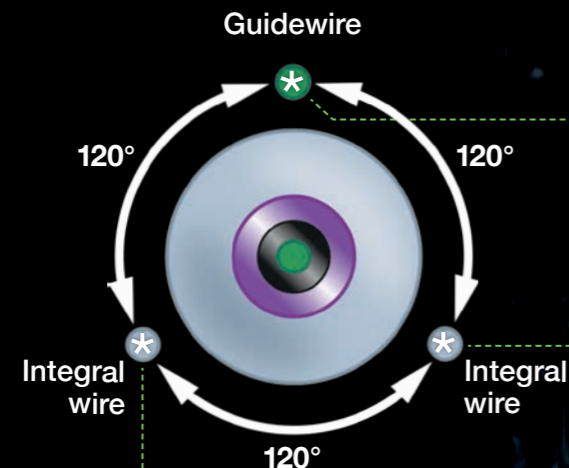
Lesion Reachability²



Tri-scoring

Greater Scoring Depth¹

Three longitudinal planes created for greater absorption from drug devices.

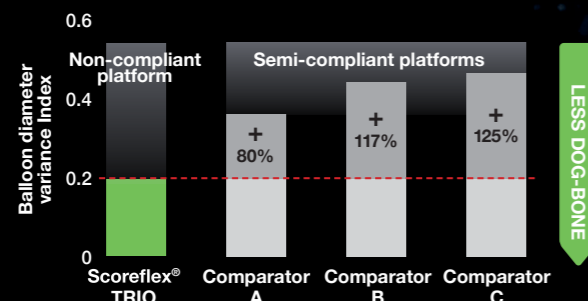


Non-compliant

Minimal Dog-bone Effect

Even pressure distribution facilitates safe and controlled balloon expansion.

Dog-bone effect at RBP*

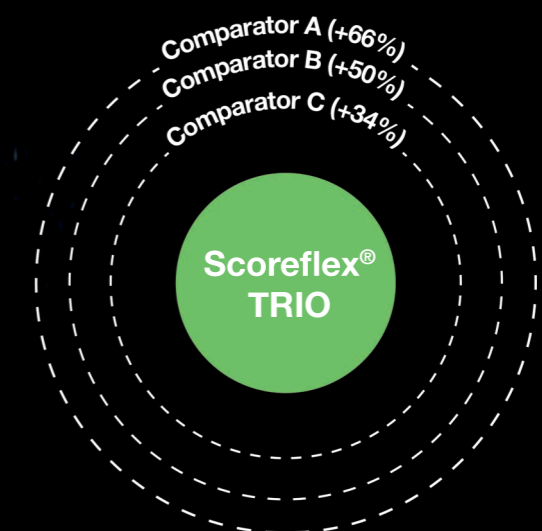


* Data on file

¹ Background OCT image courtesy of Dr. Yasuaki Koga, Oita Prefectural Hospital, Japan

² RCA angiographic and OCT images courtesy of Drs. Takanobu Mitarai and Yuki Ishibashi, St. Marianna University Hospital, Japan

Competitive Crossing Profile*



Greater Balloon Flexibility*

