

Goodtec

Y-CONNECTOR SET II™
TYPE OKAY II

Connecting design, function and performance



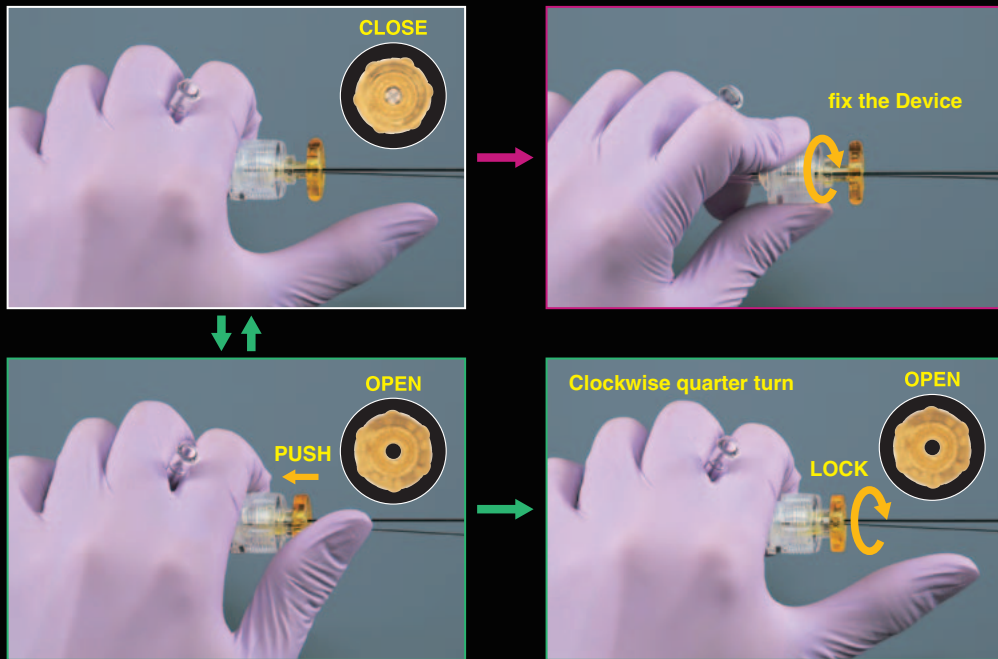
Goodtec

Y-CONNECTOR SET TYPE OKAY II™

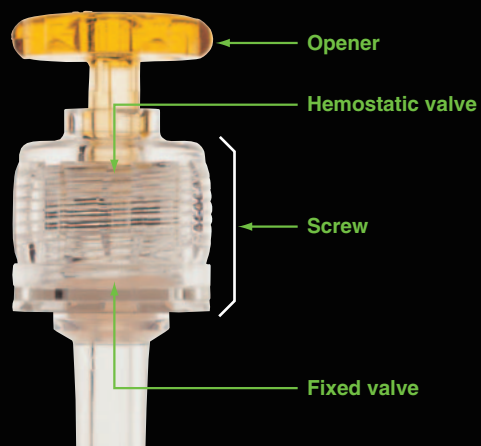
Feature

- Maintaining the popular easy-to-use one-touch hemostatic valve design, OKAY II now features a locking mechanism. Once the hemostatic valve has been opened, a clockwise quarter turn locks the valve in the open position.

How to use



- ▶ **Large lumen (Nominal ID:10Fr, 3.33mm)**
Allows for use in combination with various products for a variety of PCI strategies.
- ▶ **Superior design**
Facilitates single-handed operation.
- ▶ **Minimizes blood loss**
Two valves (hemostatic and fixed) greatly reduce blood loss during the procedure.
- ▶ **Ease-of-use**
Hemostatic valve features a locking mechanism.



Contents	Y-CONNECTOR, INSERTER, TORQUE DEVICE
Model No.	YOK0A

- GOODTEC Y-Connector Set is a trademark of Goodman Co., Ltd.
- Please refer to the Instructions For Use for further details regarding product use and specifications.

Connecting design, function and performance

Manufacturer



Distributed by



ASAHI INTECC CO., LTD., EUROPE OFFICE
Strawinskylaan 967, (WTC tower D-9th) 1077 XX,
Amsterdam The Netherlands
TEL: +31-20-794-0640 FAX: +31-20-794-0641



OKAY II-1203-A1